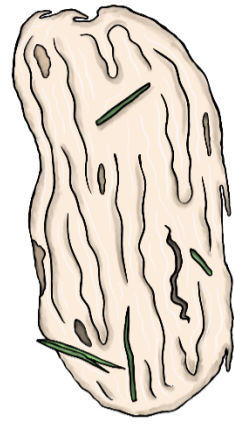


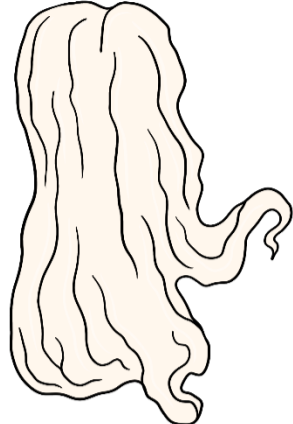
Sheep shearing

1

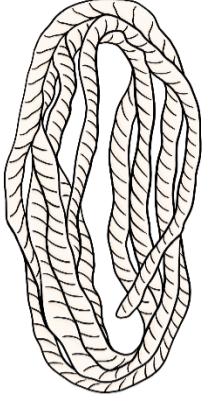
A farmer shears a sheep by hand or machine.



unclean wool



clean wool

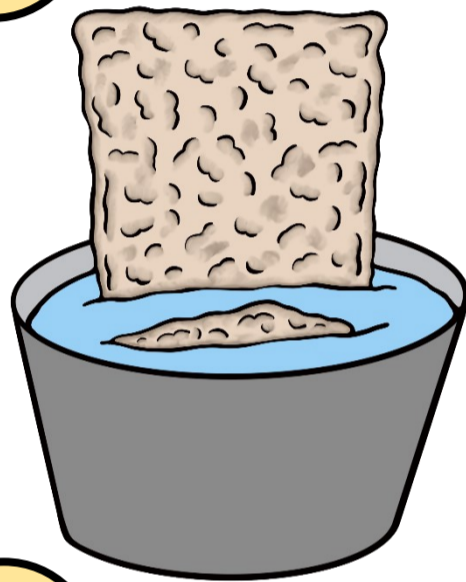


spun wool

2

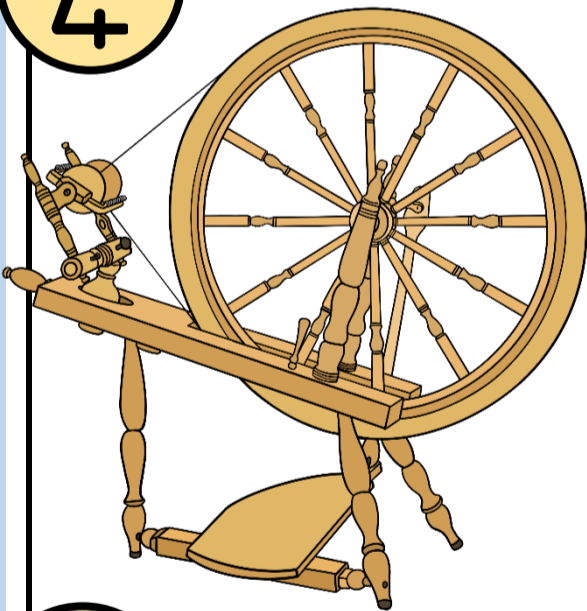
Wool is then sorted by hand according to quality and length.

3



Wool is washed to clean it. Wool clips are washed again to prepare them for spinning.

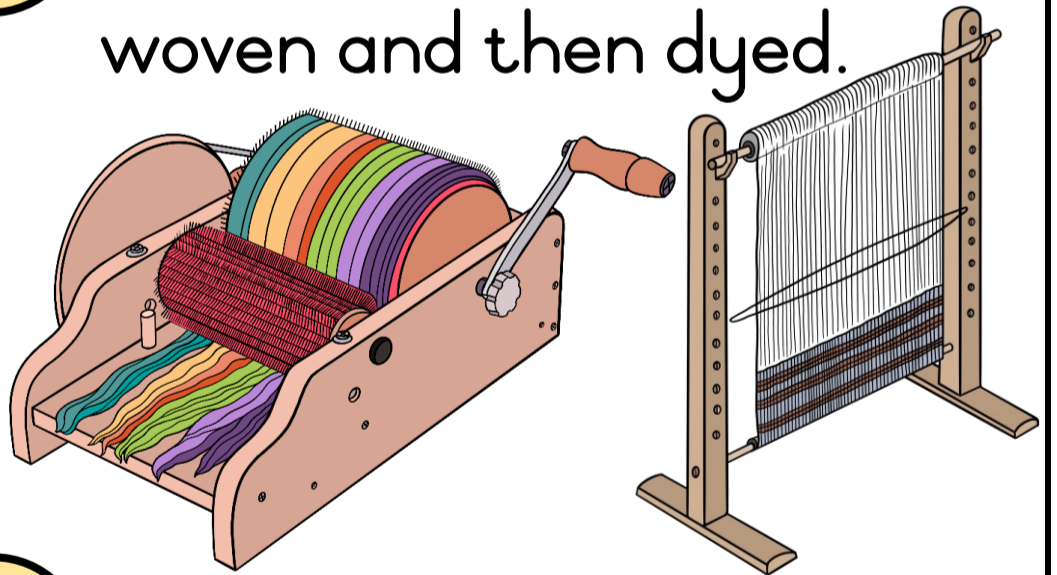
4



The wool is stretched and plated during the spinning process.

5

The wool is ready to be woven and then dyed.



6

The wool is used to knit hats, jerseys, mittens or socks.



7

It is then sold in shops.

