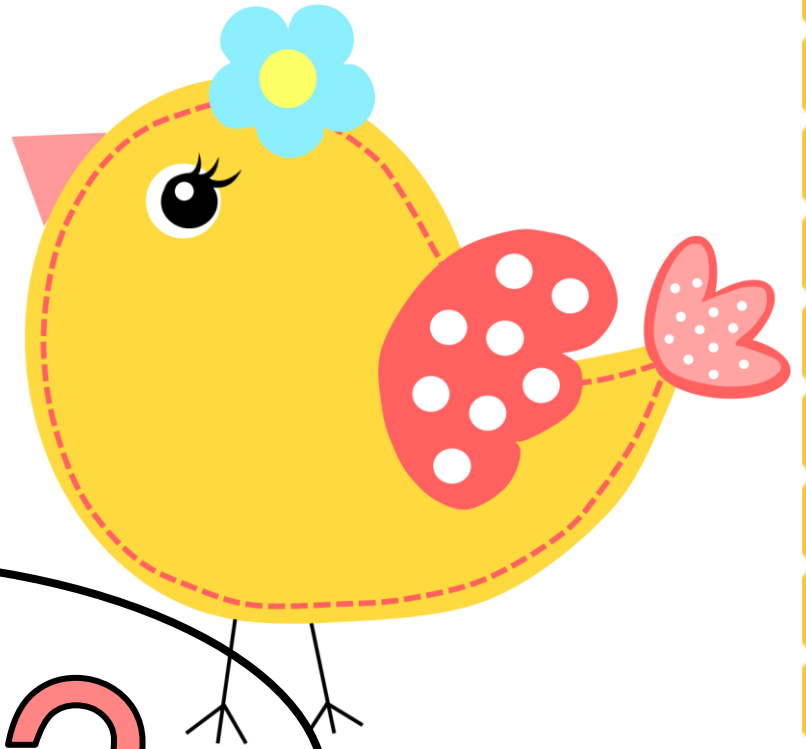


Groter as

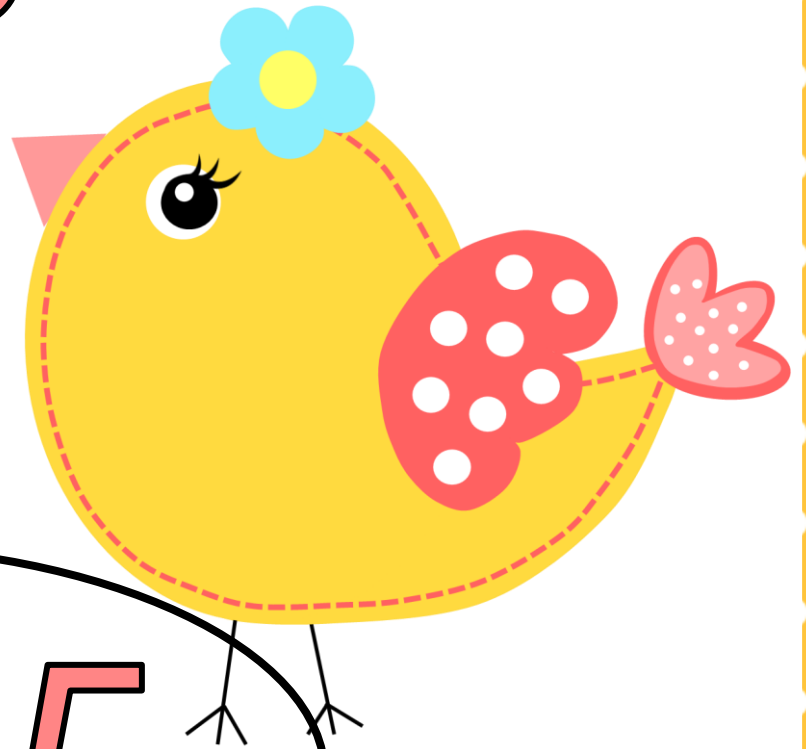


$$5 > 3$$

5 is groter as 3.

Die bekkie van die teken is oop
na die getal wat groter is.

Gelyk aan

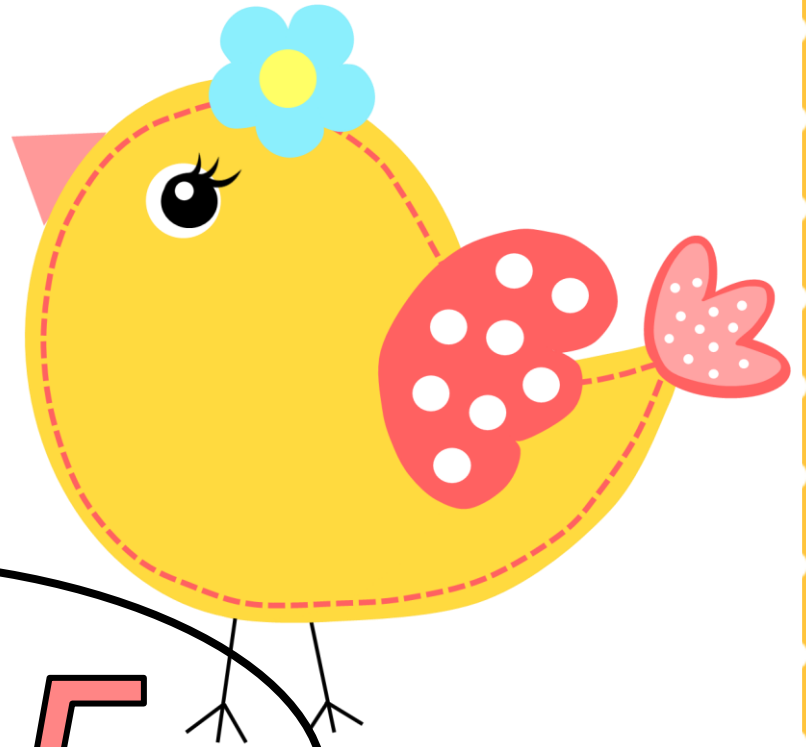


$$5 = 5$$

5 is gelyk aan 5.

Getalle is gelyk aan mekaar as hulle dieselfde waarde het.

Kleiner as



$$3 < 5$$

3 is kleiner as 5.

Die bekkie van die teken is toe na die getal wat kleiner is.