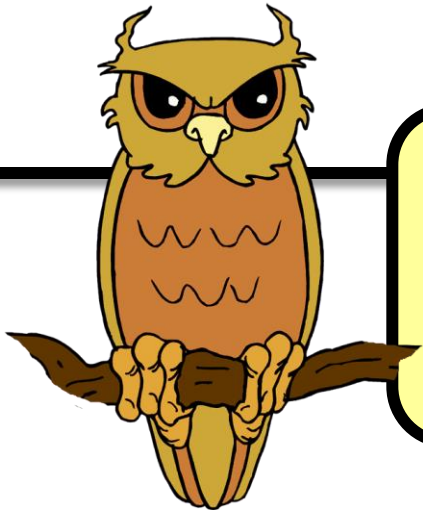


# Habitat

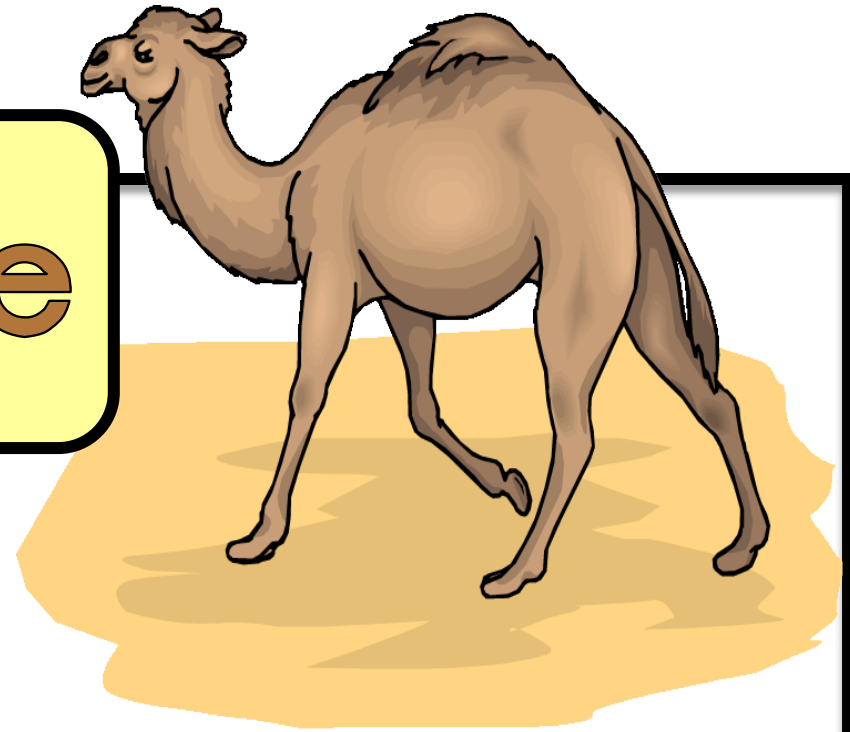


Wat is 'n habitat?

Die plek waar 'n  
plant of dier  
bly word 'n  
habitat genoem.



# Woestyne



Woestyne is droog.  
Party plante en diere  
benodig nie so baie  
water soos ander  
plante en diere nie.

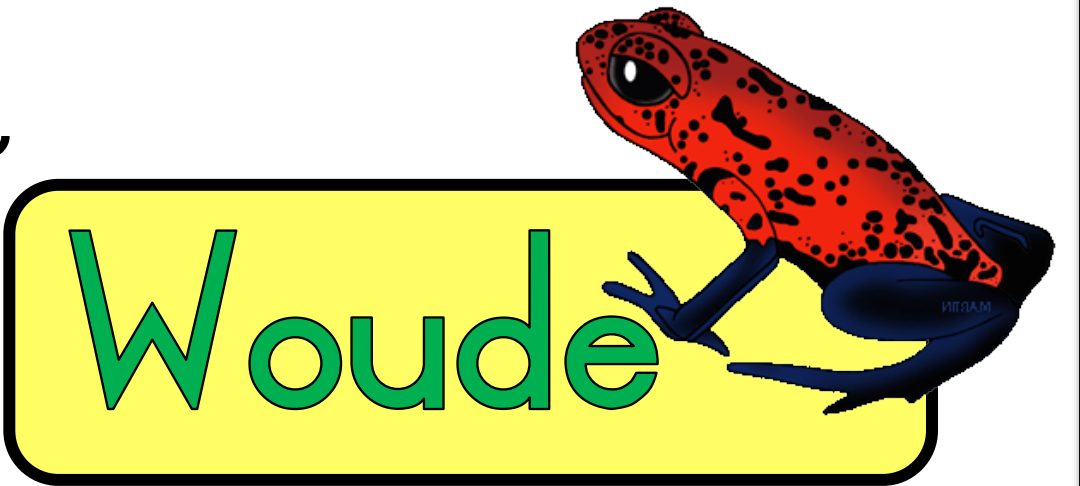
# Riviere

Diere soos krokodille, waterskilpaaie en visse leef in riviere. Eende en insekte leef op die water.

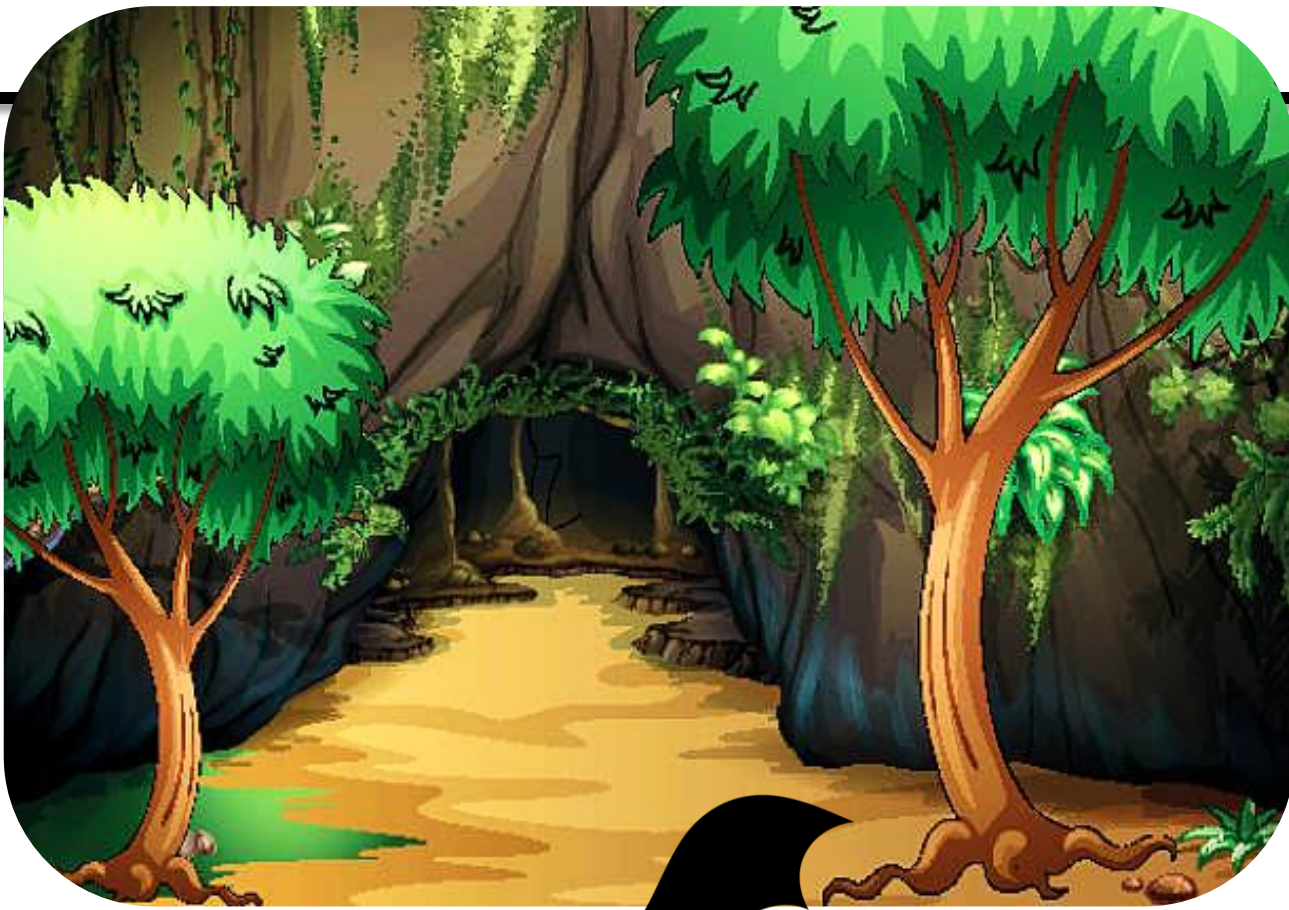




Diere en plante  
wat koeler plekke met  
skaduwee verkies,  
woon in woude.



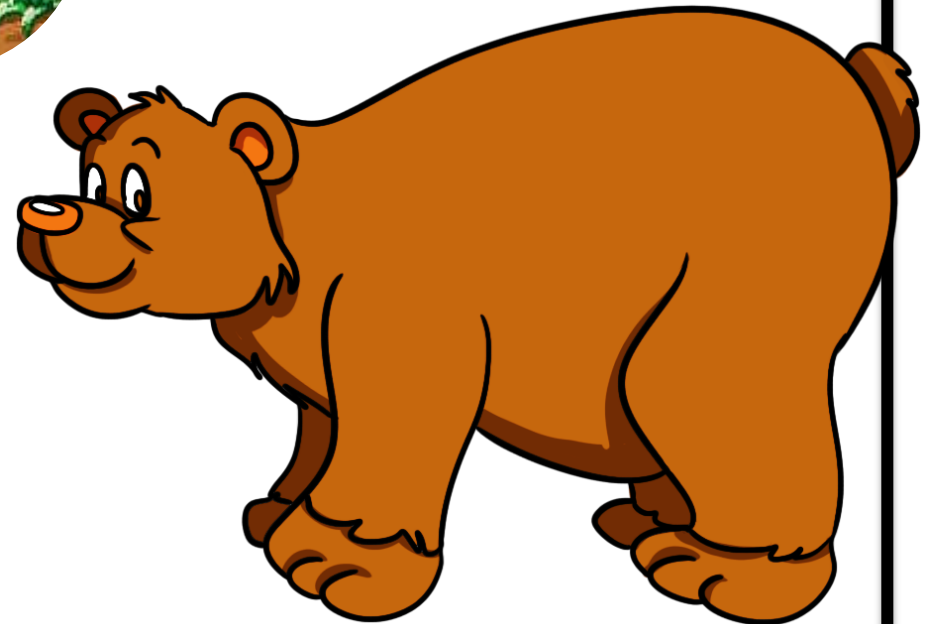
Woude



Diere soos bere  
en vlermuise  
woon in grotte.



Grotte

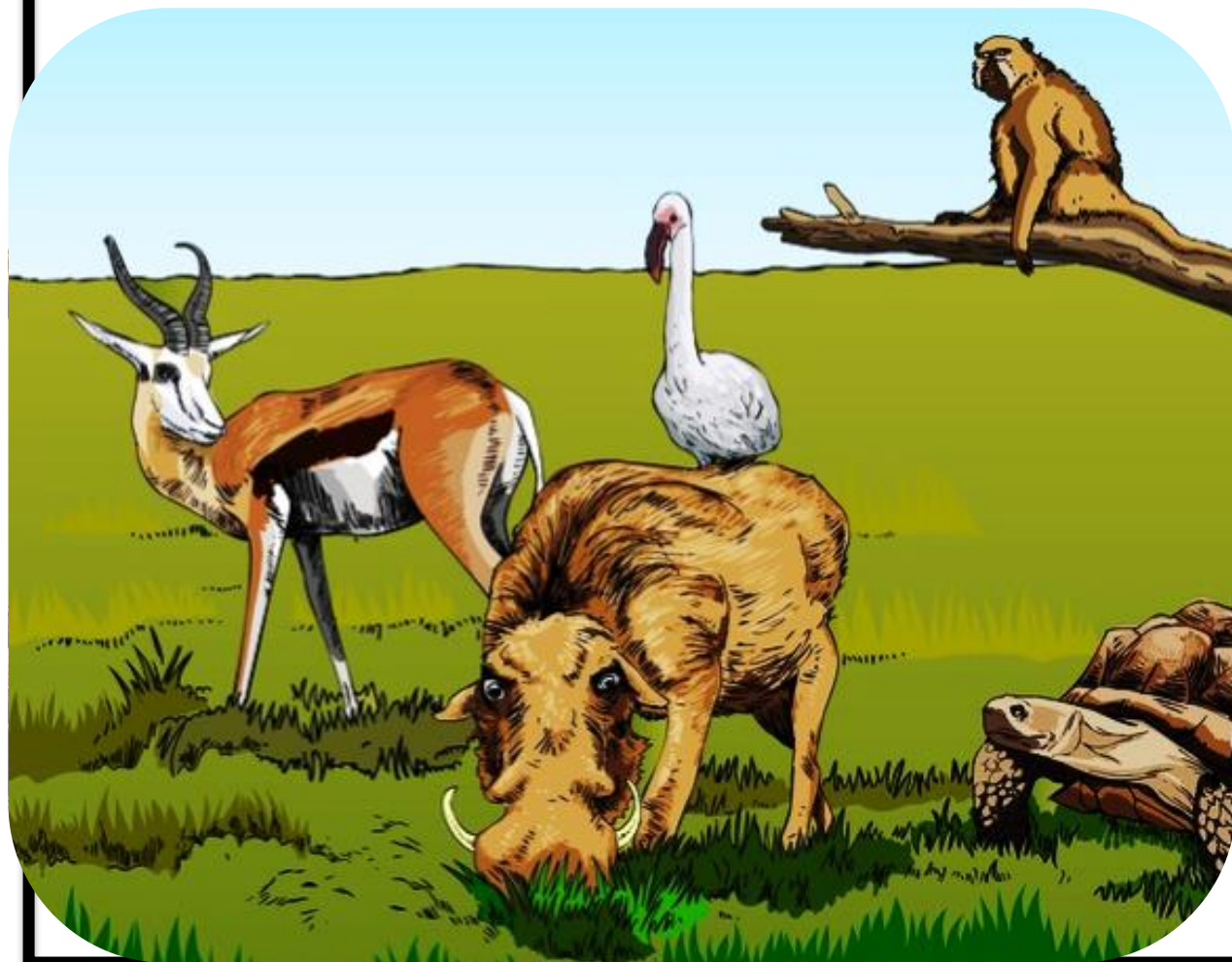




# Grasvelde

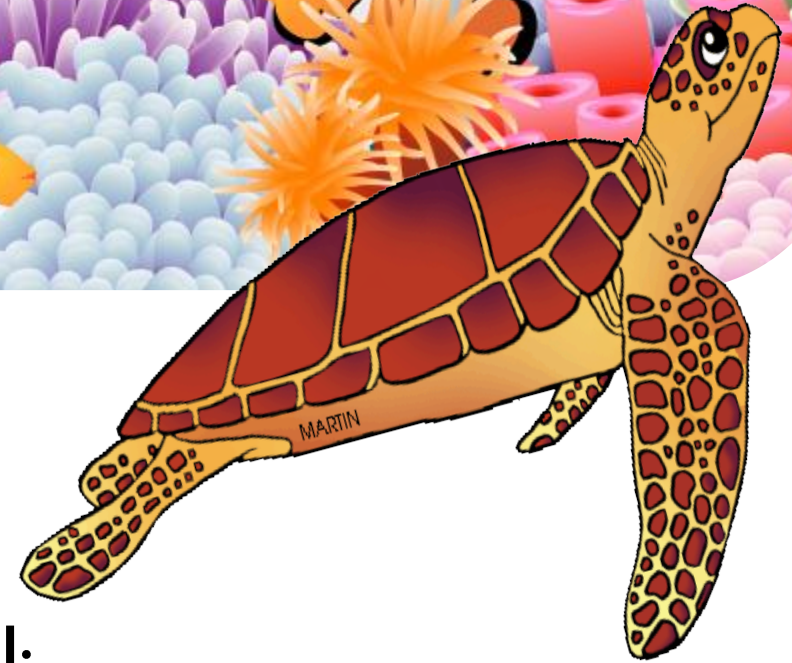
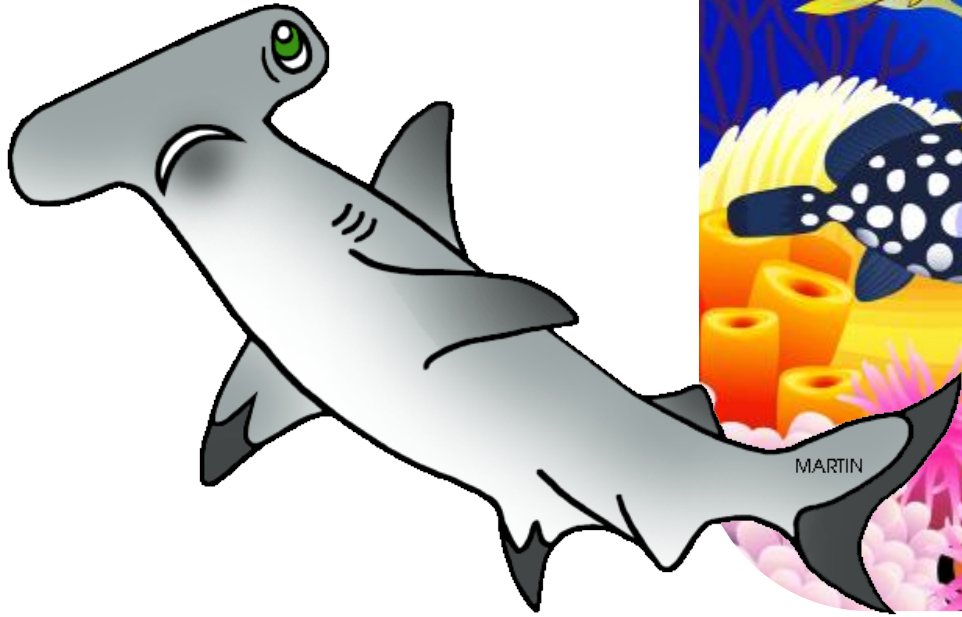


Dit  
reën in  
die  
somer.



Daar is baie  
soorte grasse en  
min bome.

See



Die see is sout water.  
Diere soos haaie, robbe,  
skilpaaie en visse woon in die see.