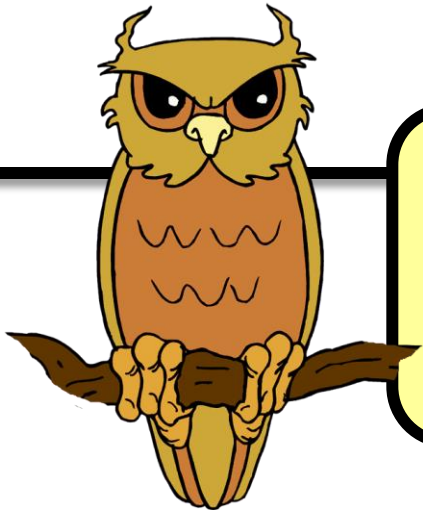


Habitat

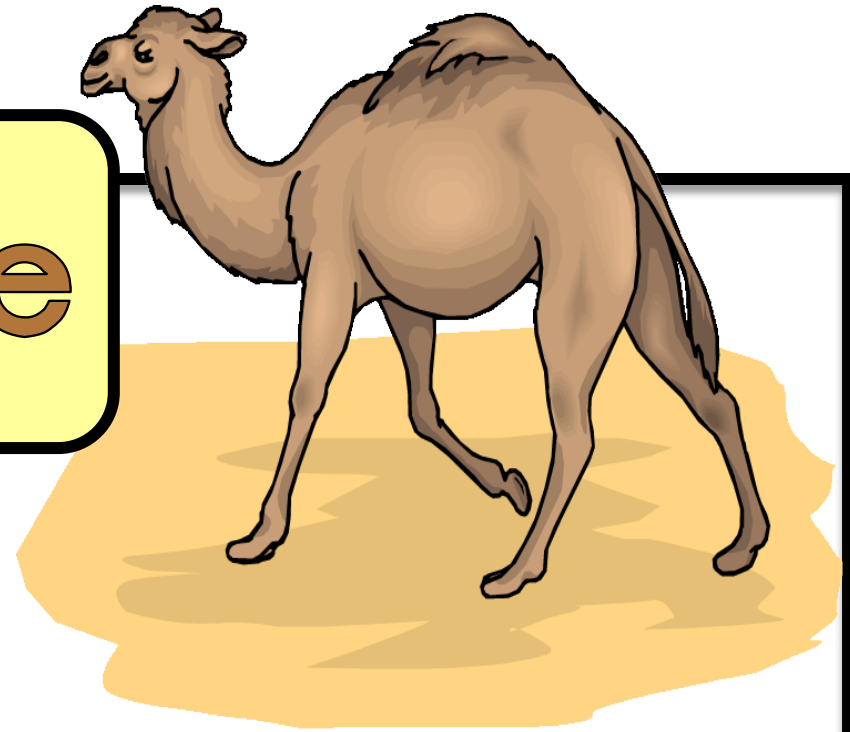


Wat is 'n habitat?

Die plek waar 'n
plant of dier
bly word 'n
habitat genoem.



Woestyne



Woestyne is droog.
Party plante en diere
benodig nie so baie
water soos ander
plante en diere nie.

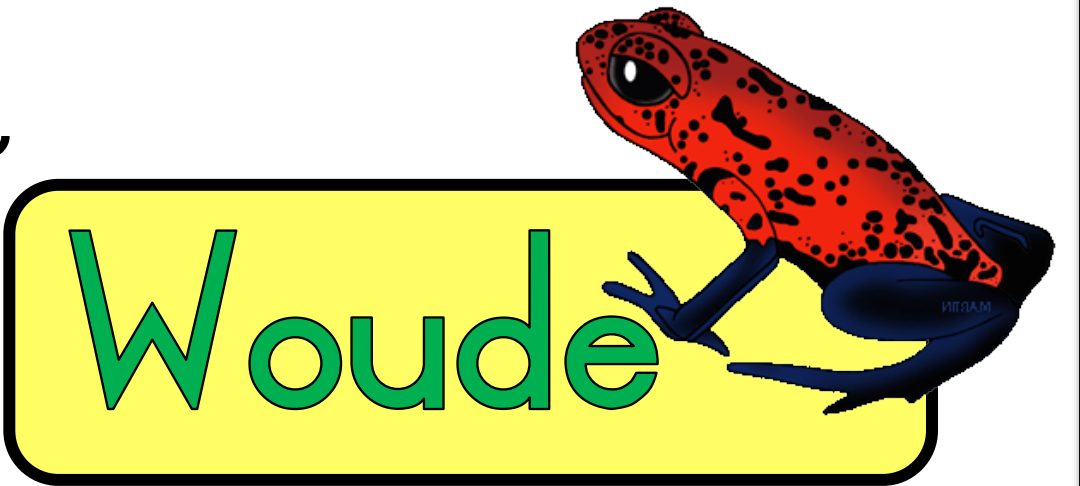
Riviere

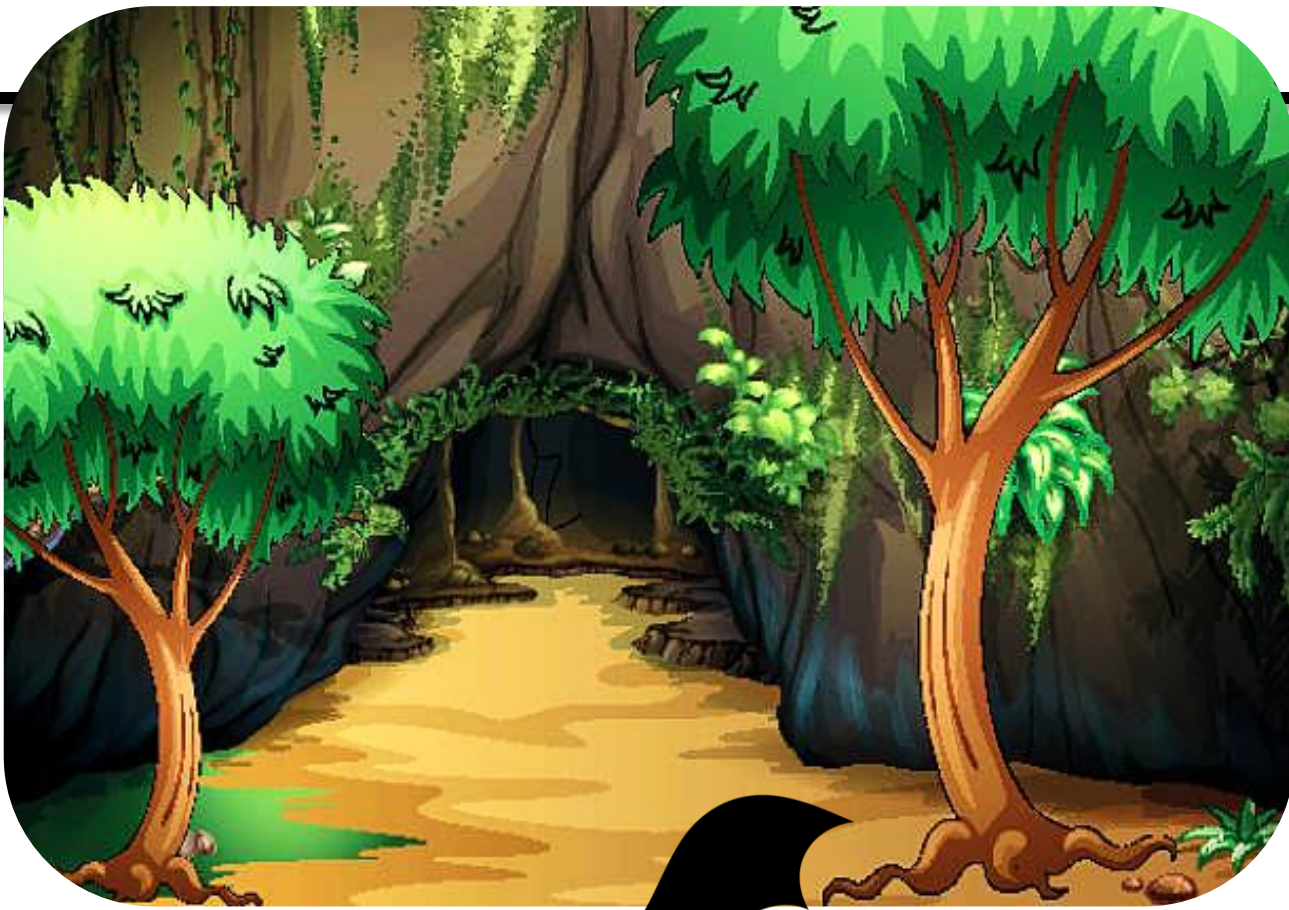
Diere soos krokodille, waterskilpaaie en visse leef in riviere. Eende en insekte leef op die water.





Diere en plante
wat koeler plekke met
skaduwee verkies,
woon in woude.

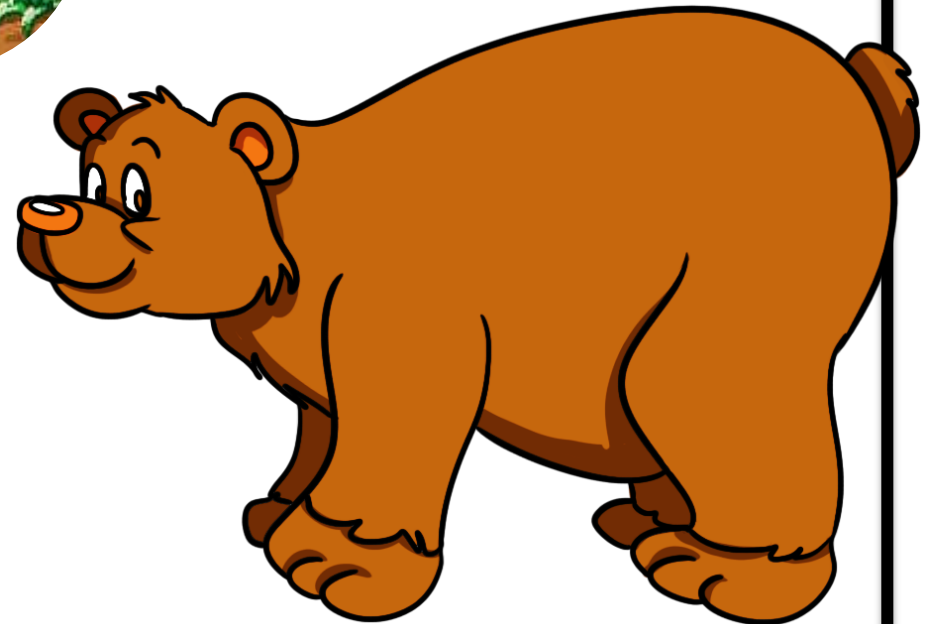




Diere soos bere
en vlermuise
woon in grotte.

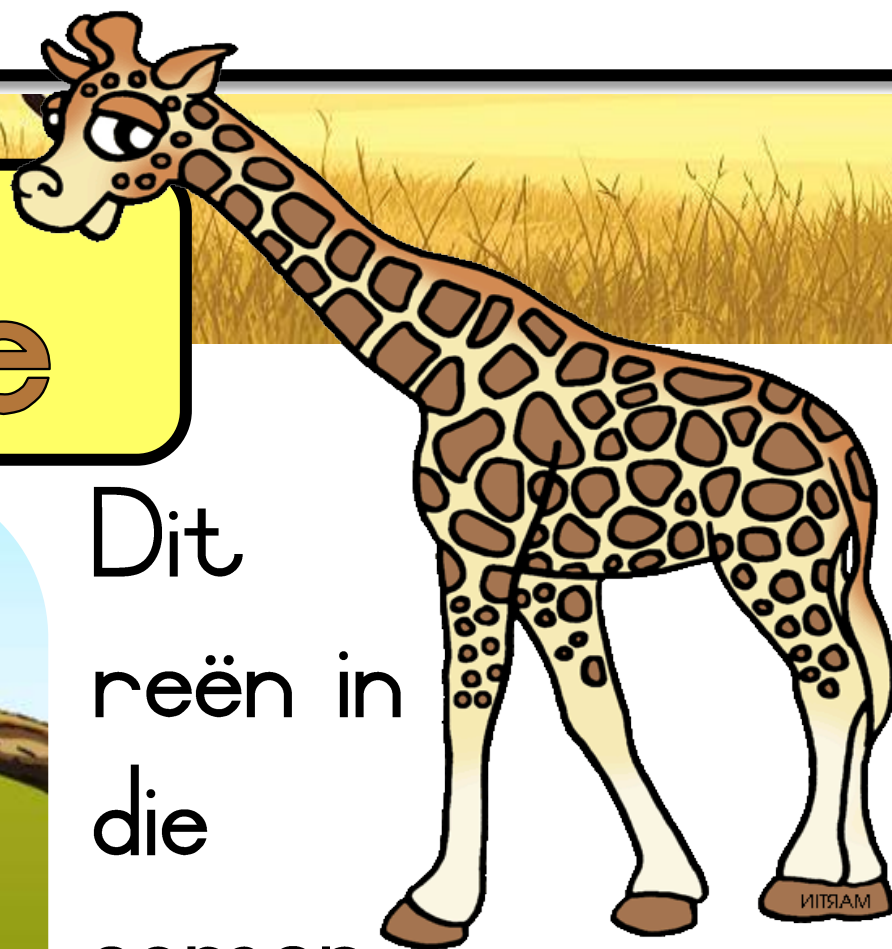


Grotte



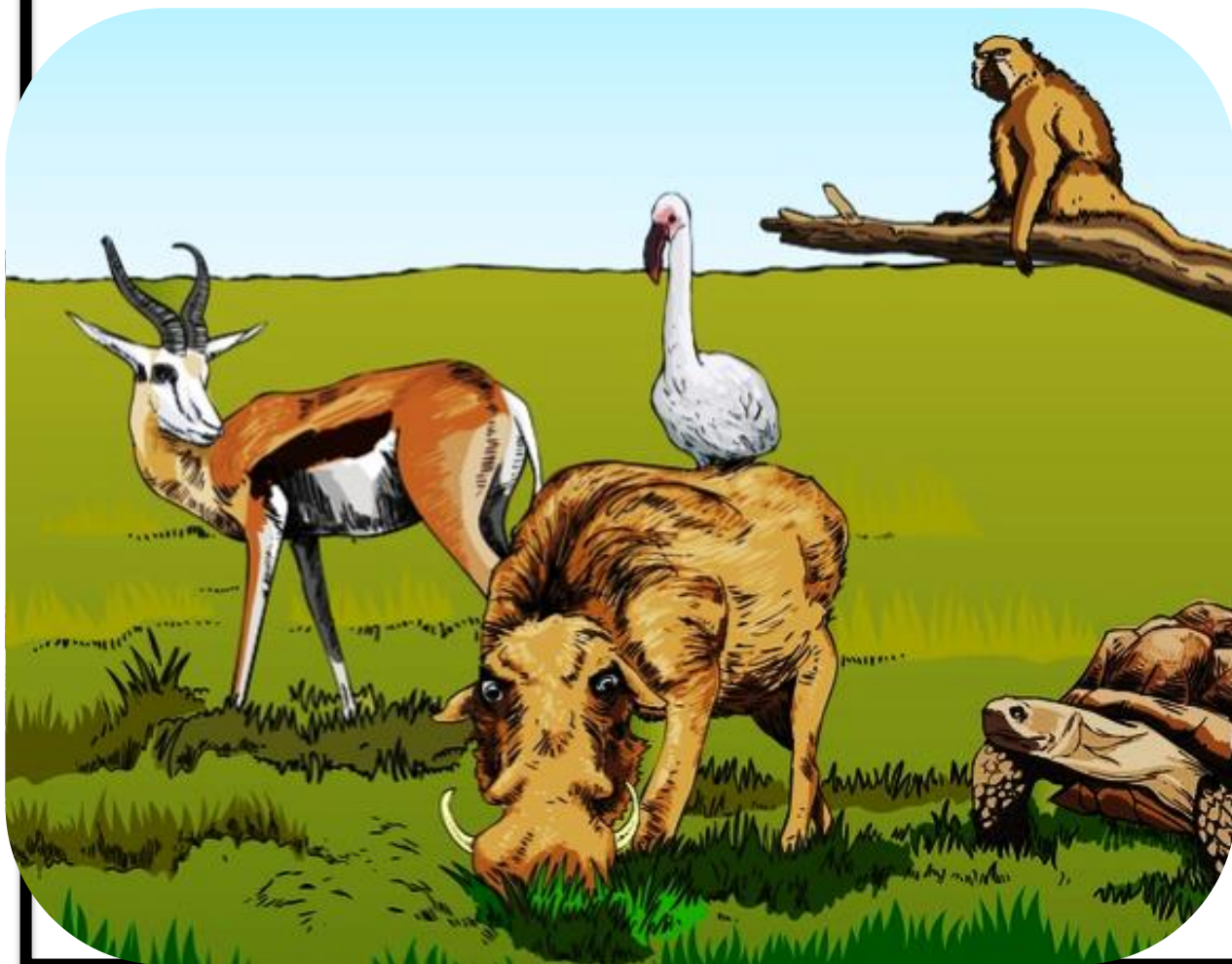


Grasvelde

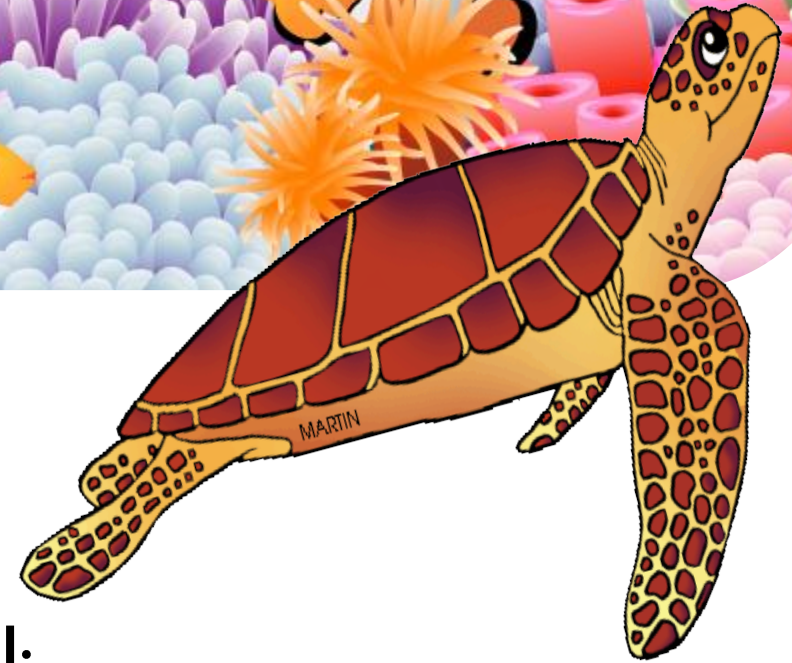
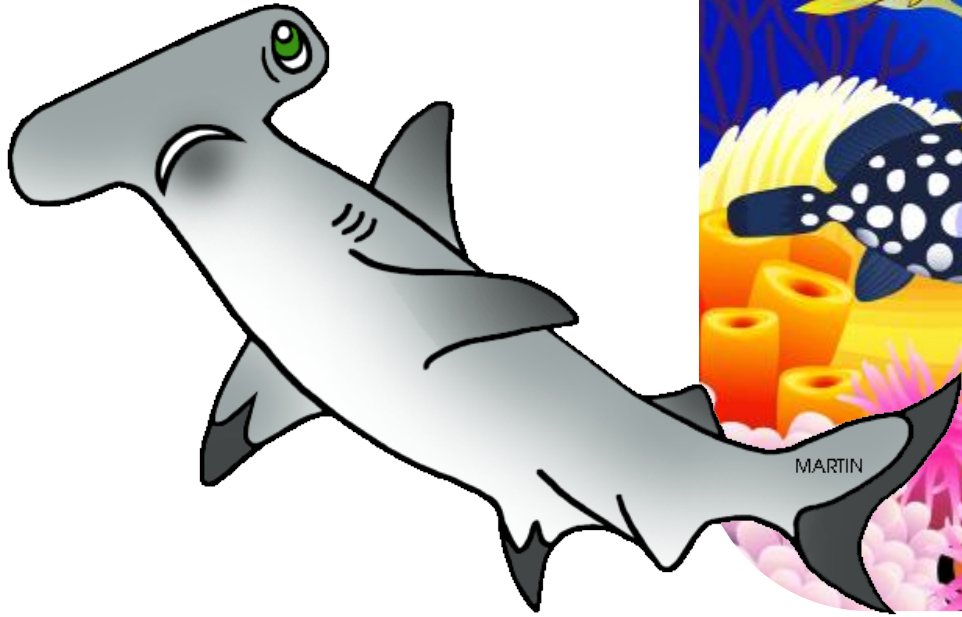


Dit
reën in
die
somer.

Daar is baie
soorte grasse en
min bome.



See



Die see is sout water.
Diere soos haaie, robbe,
skilpaaie en visse woon in die see.