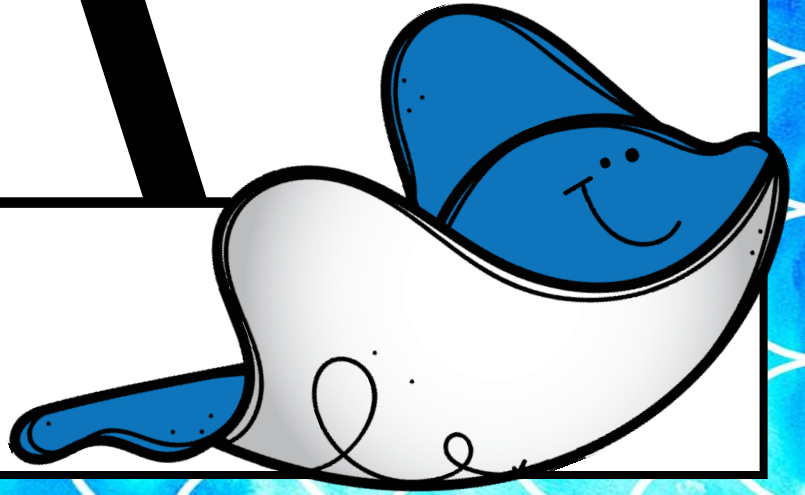
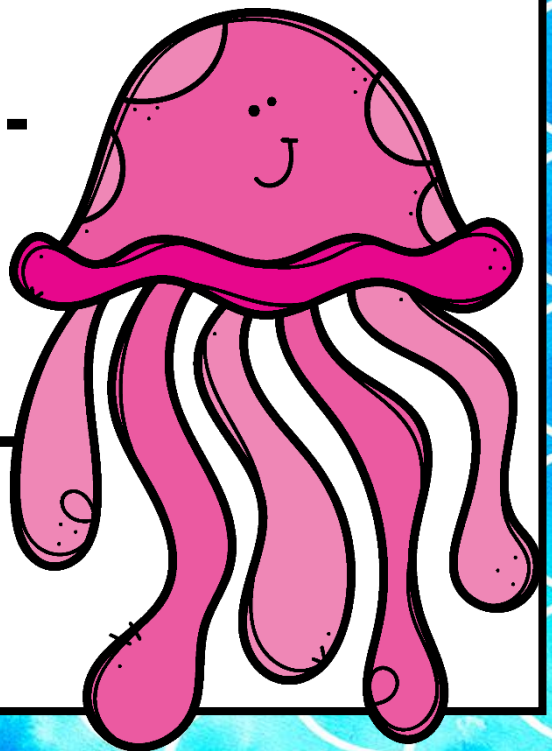


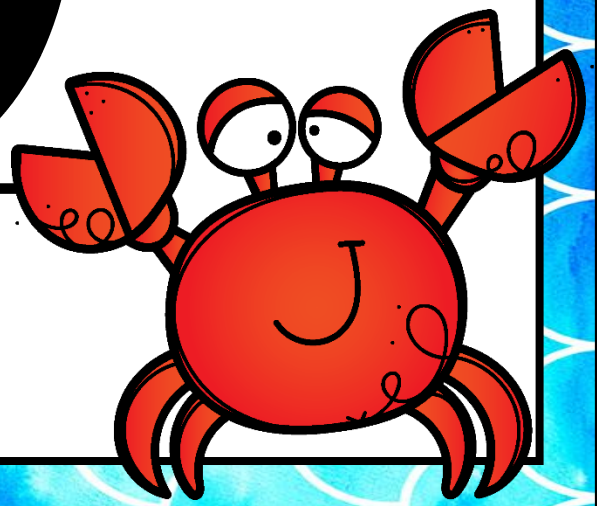
a A



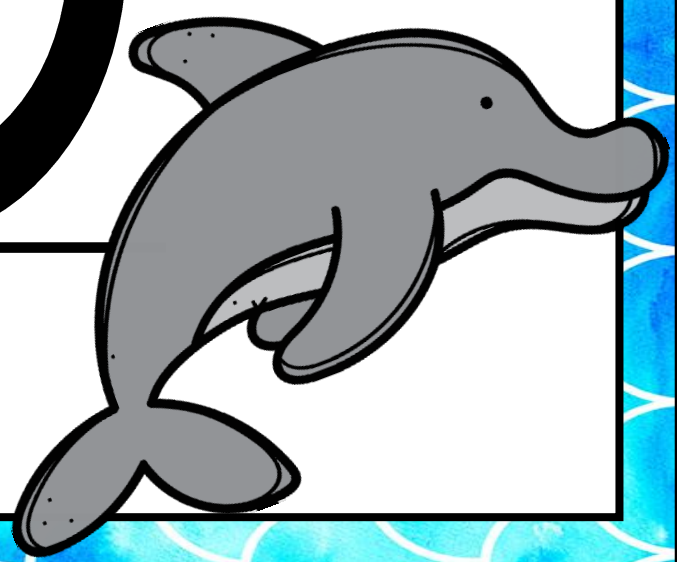
b B



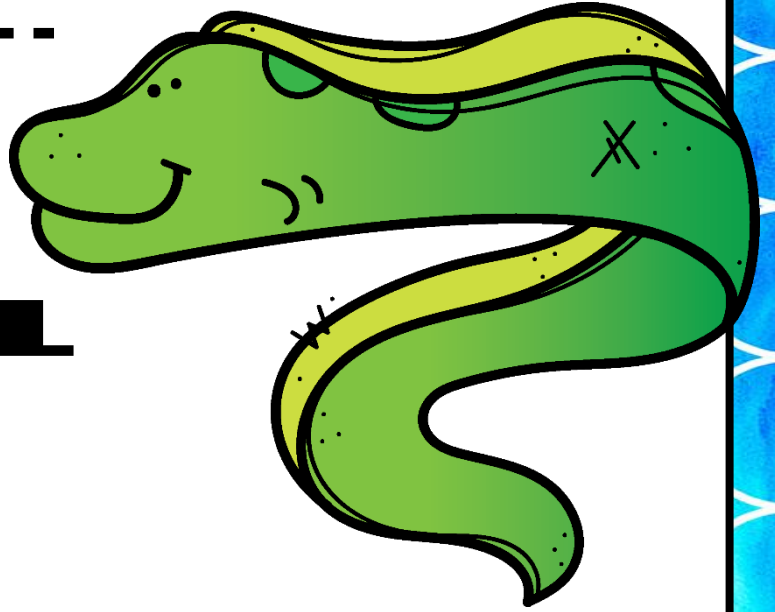
c C



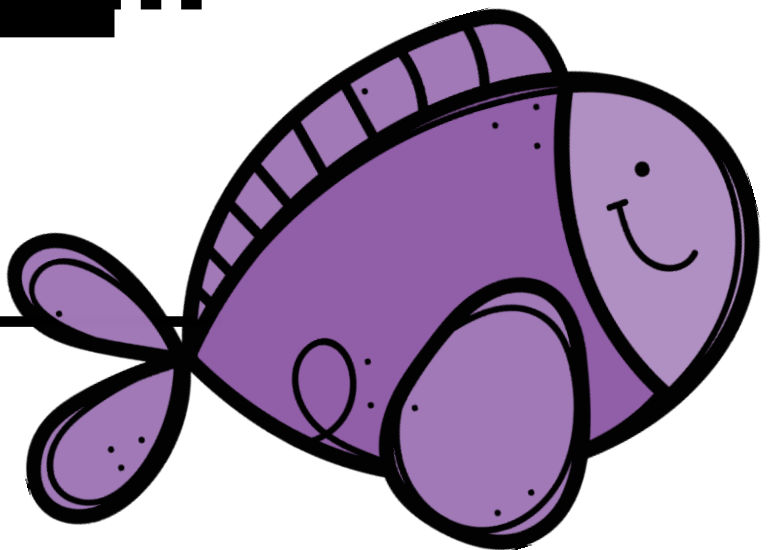
d D



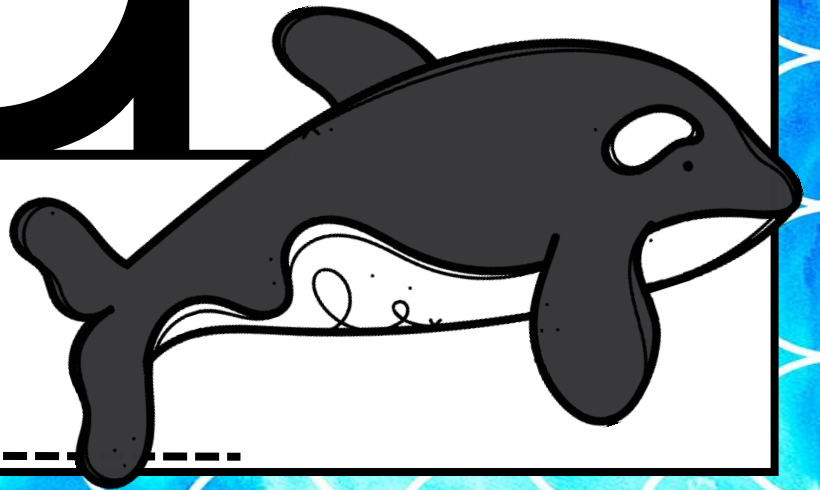
e E



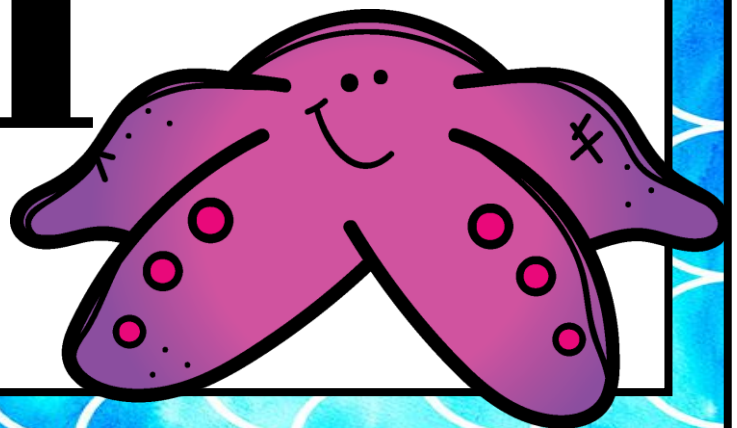
f F



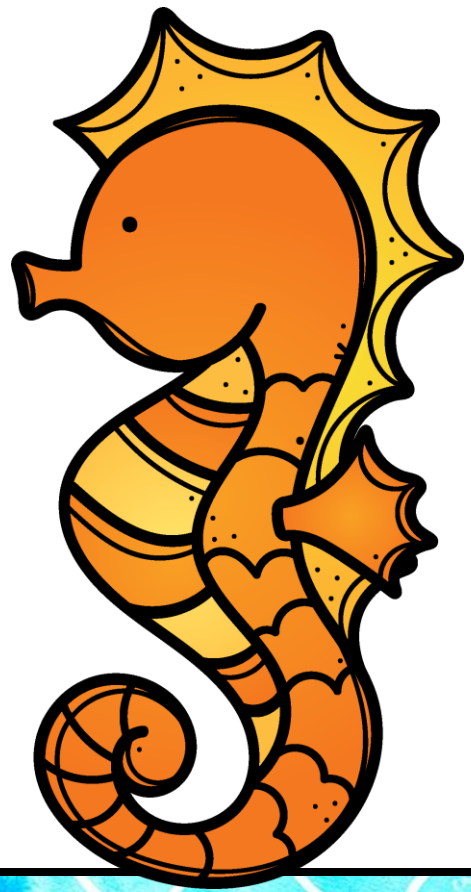
g G



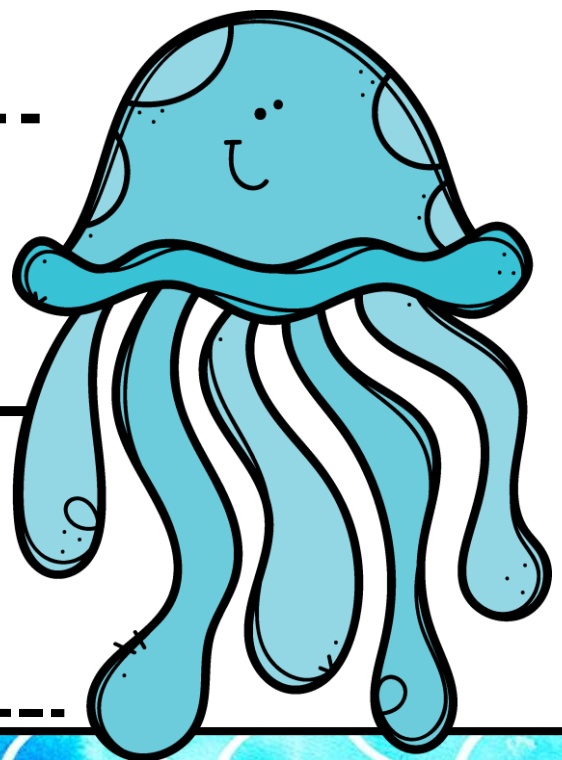
h H



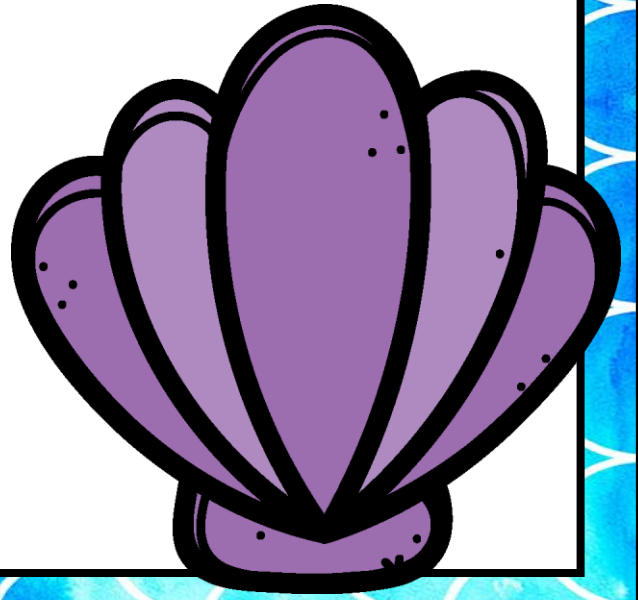
I i



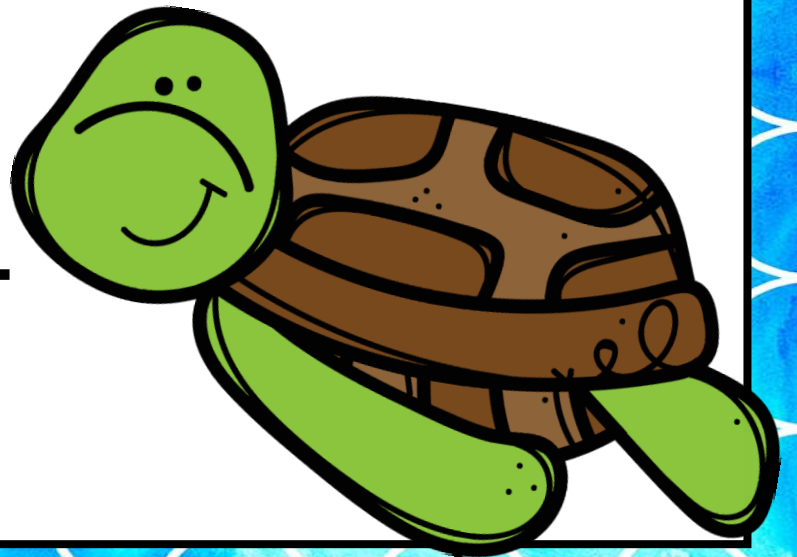
J j



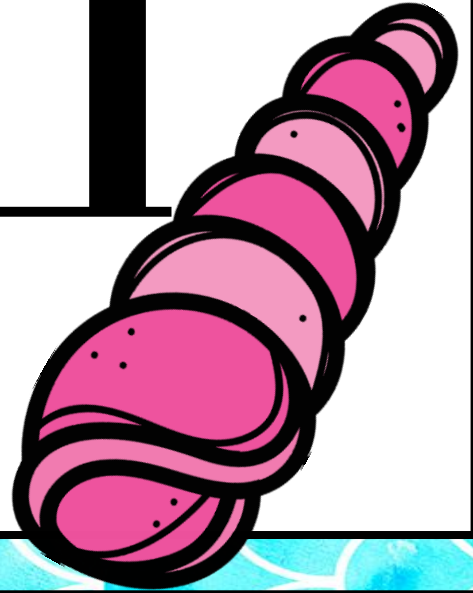
K K



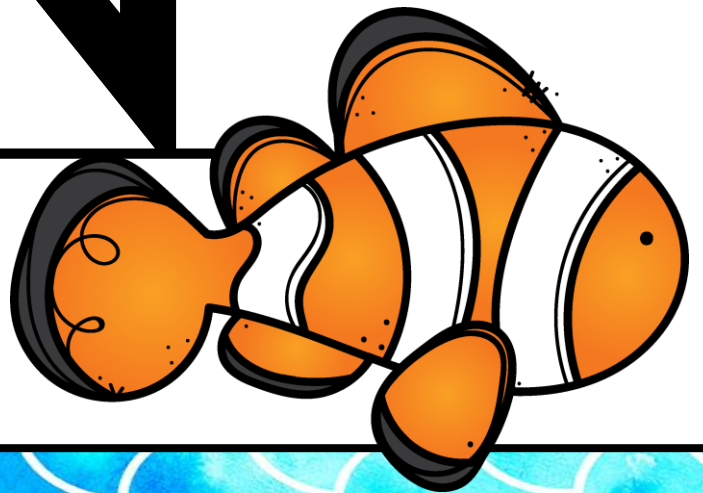
L L



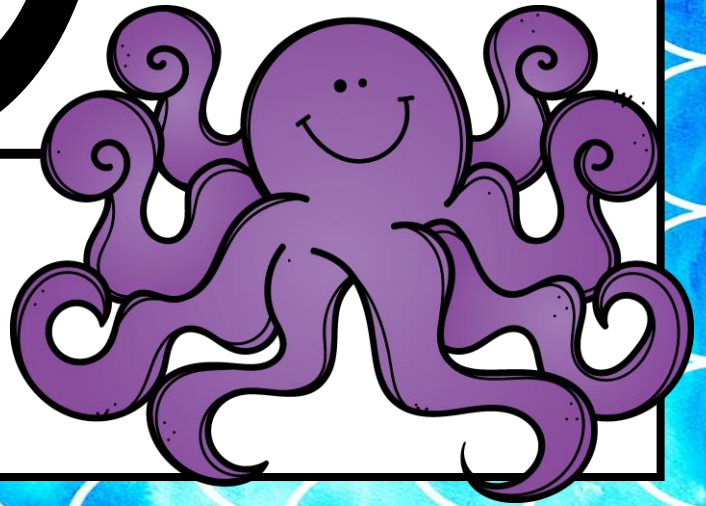
m M



n N



o O

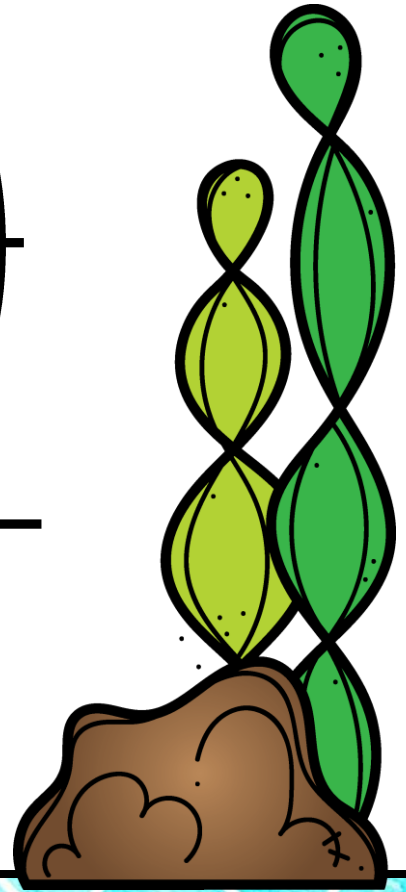


p P

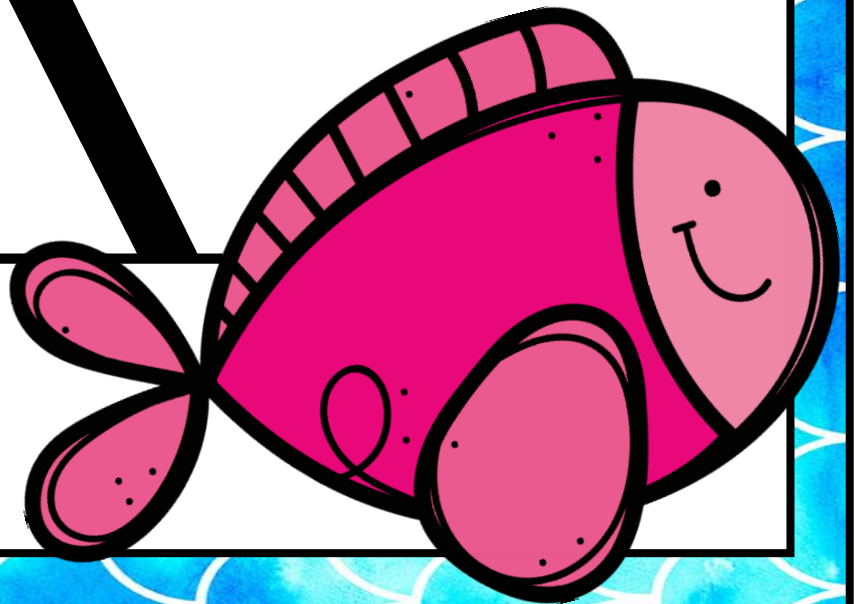




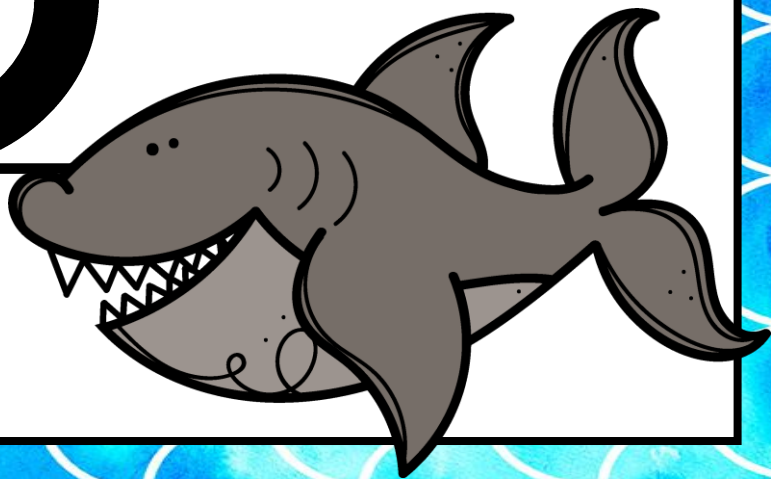
q Q



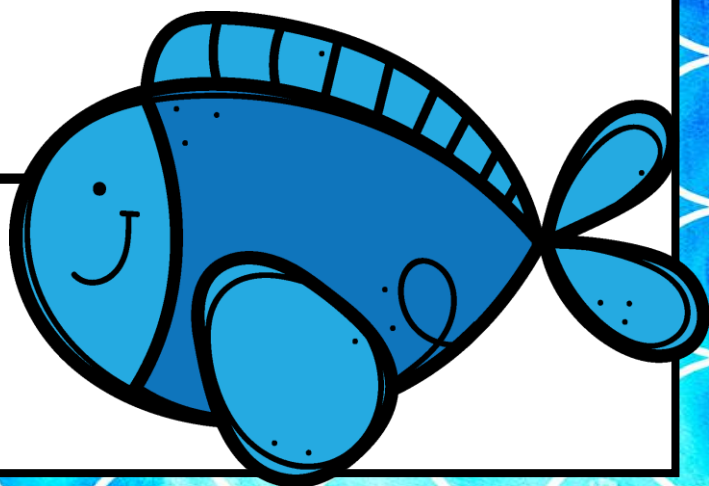
r R



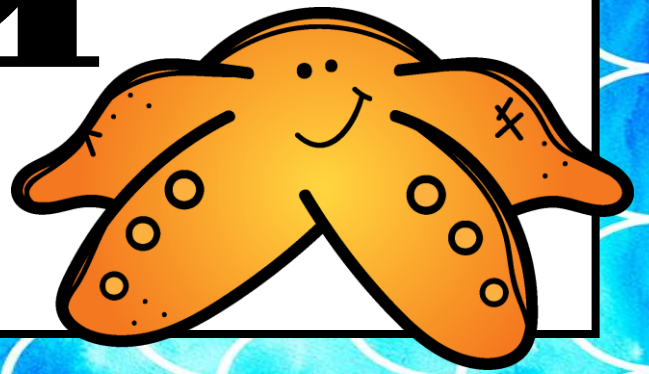
s S



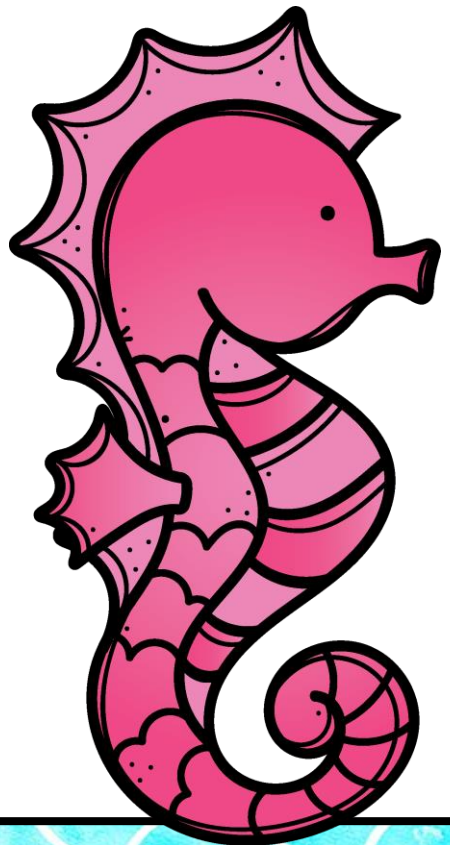
t T



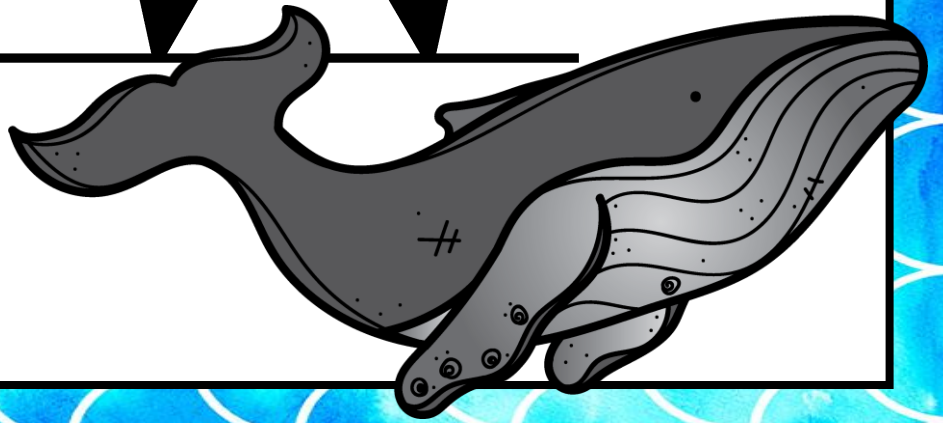
u u



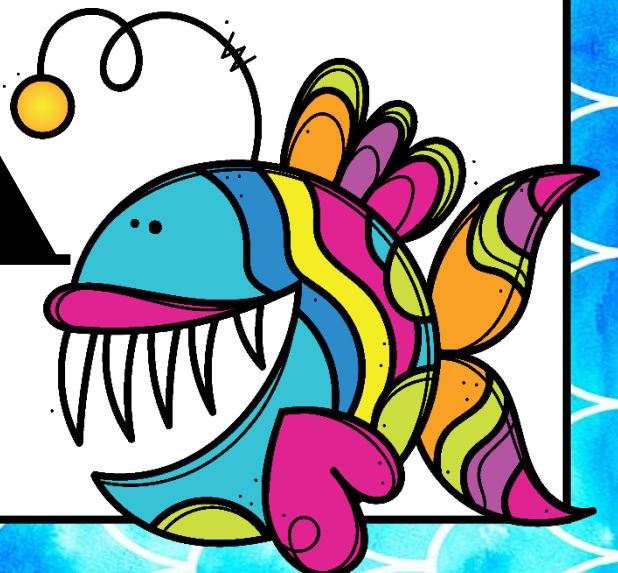
w w




w W



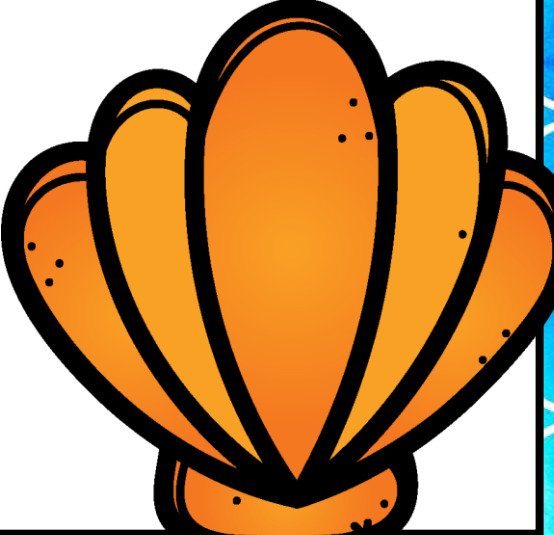
x X



Y y

A cartoon illustration of a snail. It has a brown, spiral shell with a black outline. The body is a bright green color with a simple, smiling face. The snail is positioned to the right of the letters 'Y' and 'y'.

Z z

A cartoon illustration of a scallop shell. It is shown in shades of orange and yellow with black outlines. The shell is positioned to the right of the letters 'Z' and 'z'.