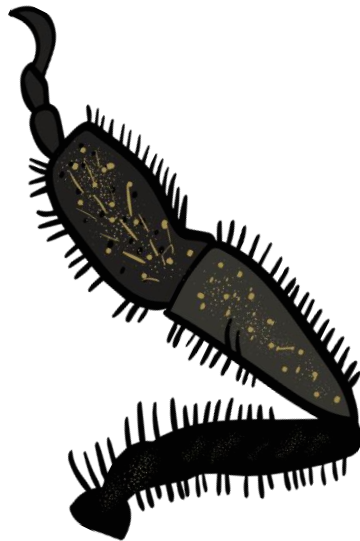




A bee is black
and yellow

The back legs
are used to
collect and
carry pollen
back to hive.



eye



A bees tongue -
proboscis

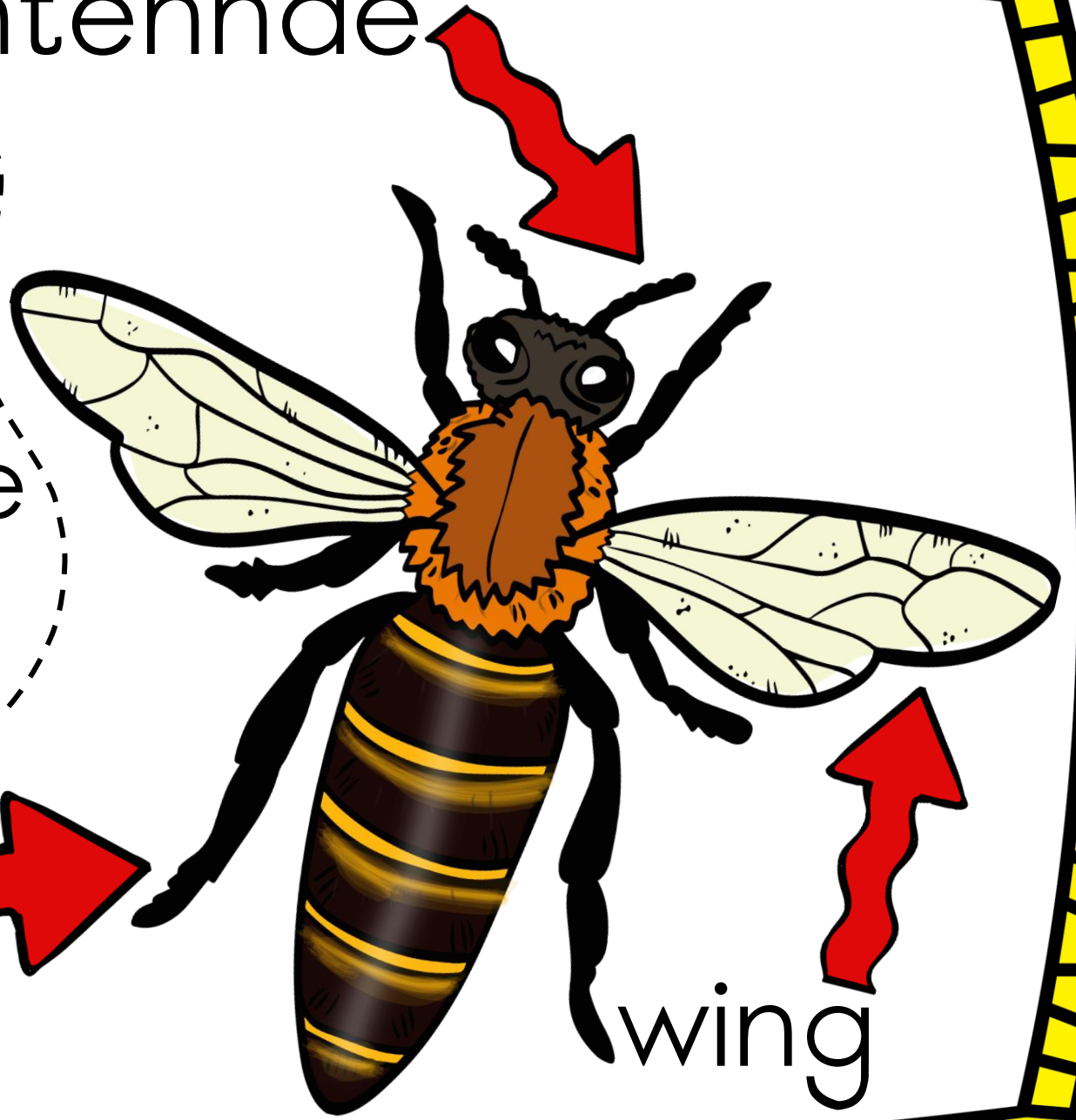
antennae

Bees have

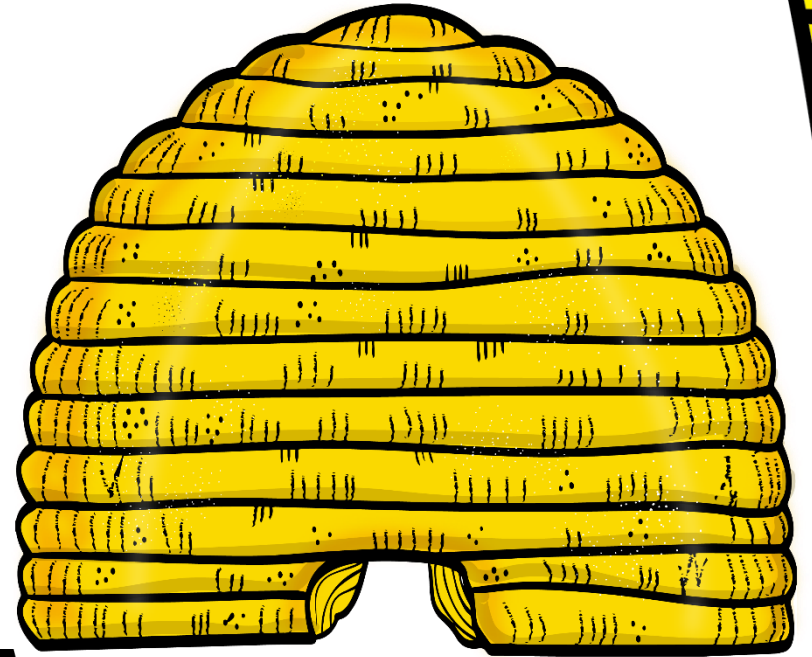
- 6 legs
- antennae
- wings

leg

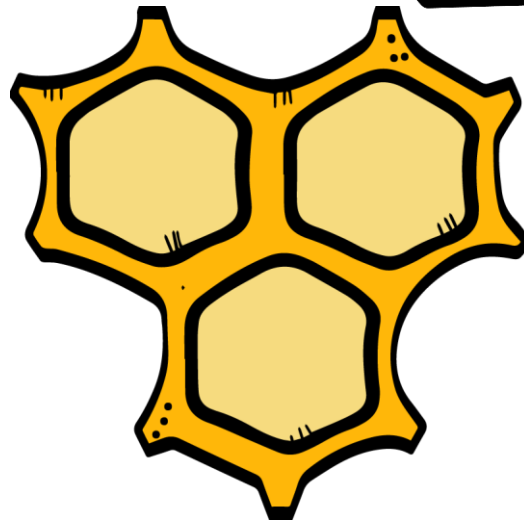
wing



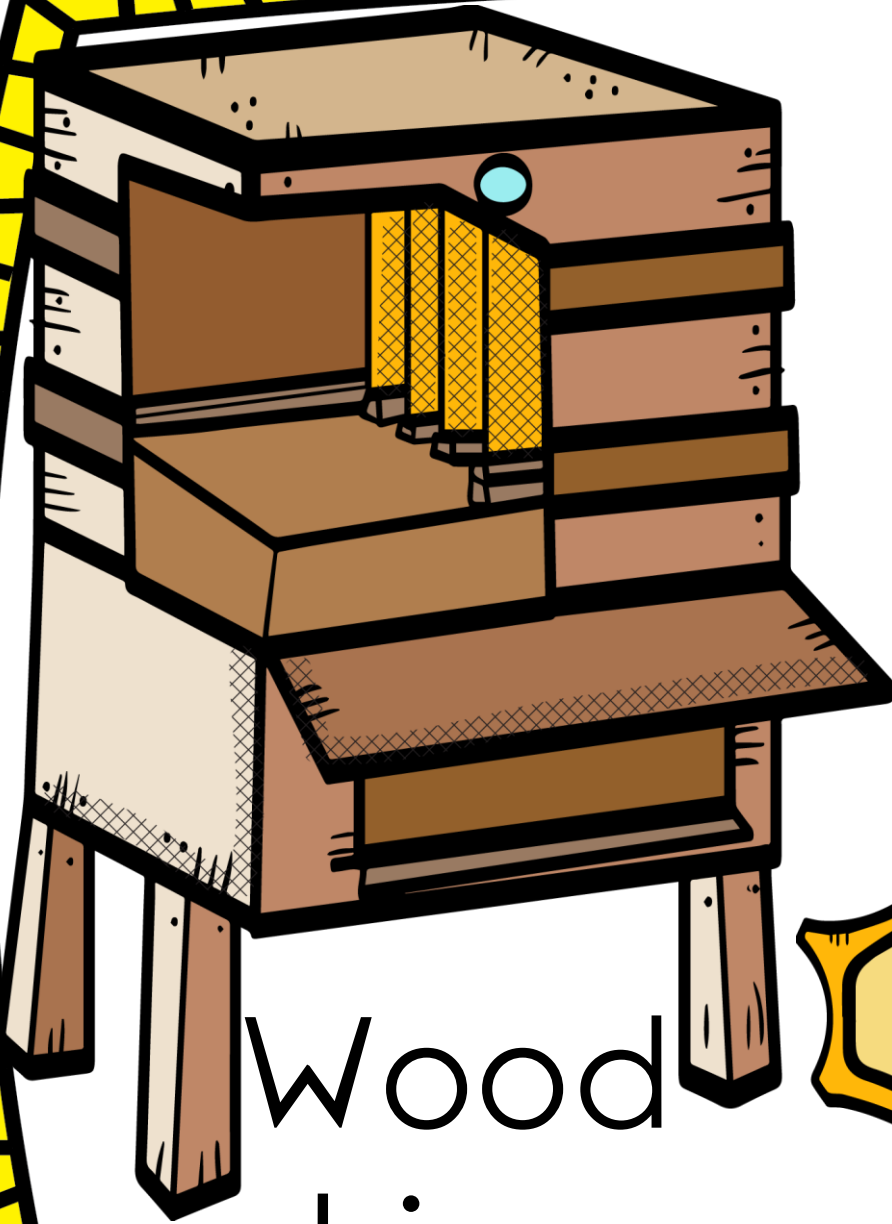
straw hive



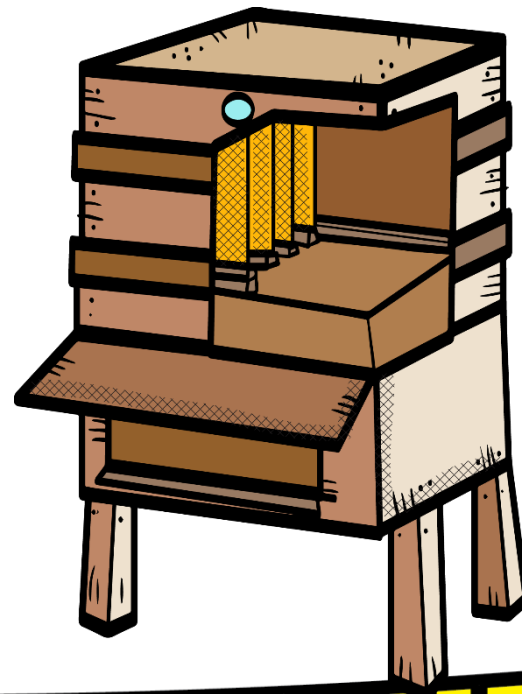
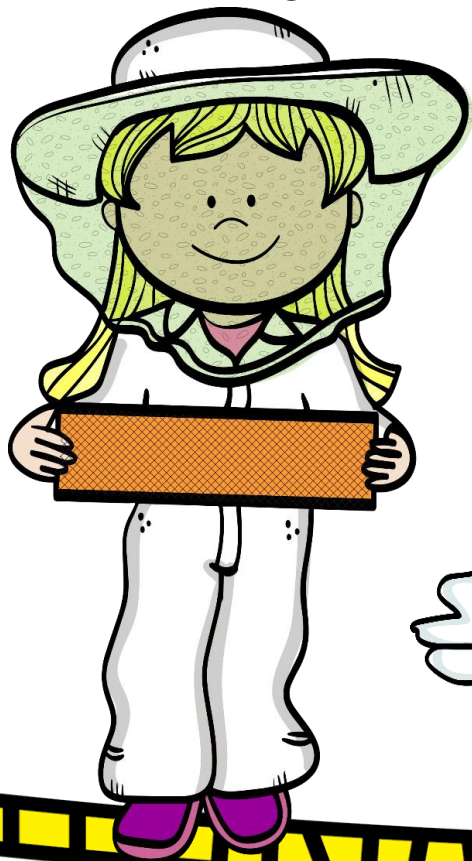
A beehive
has
hexagonal
cells.



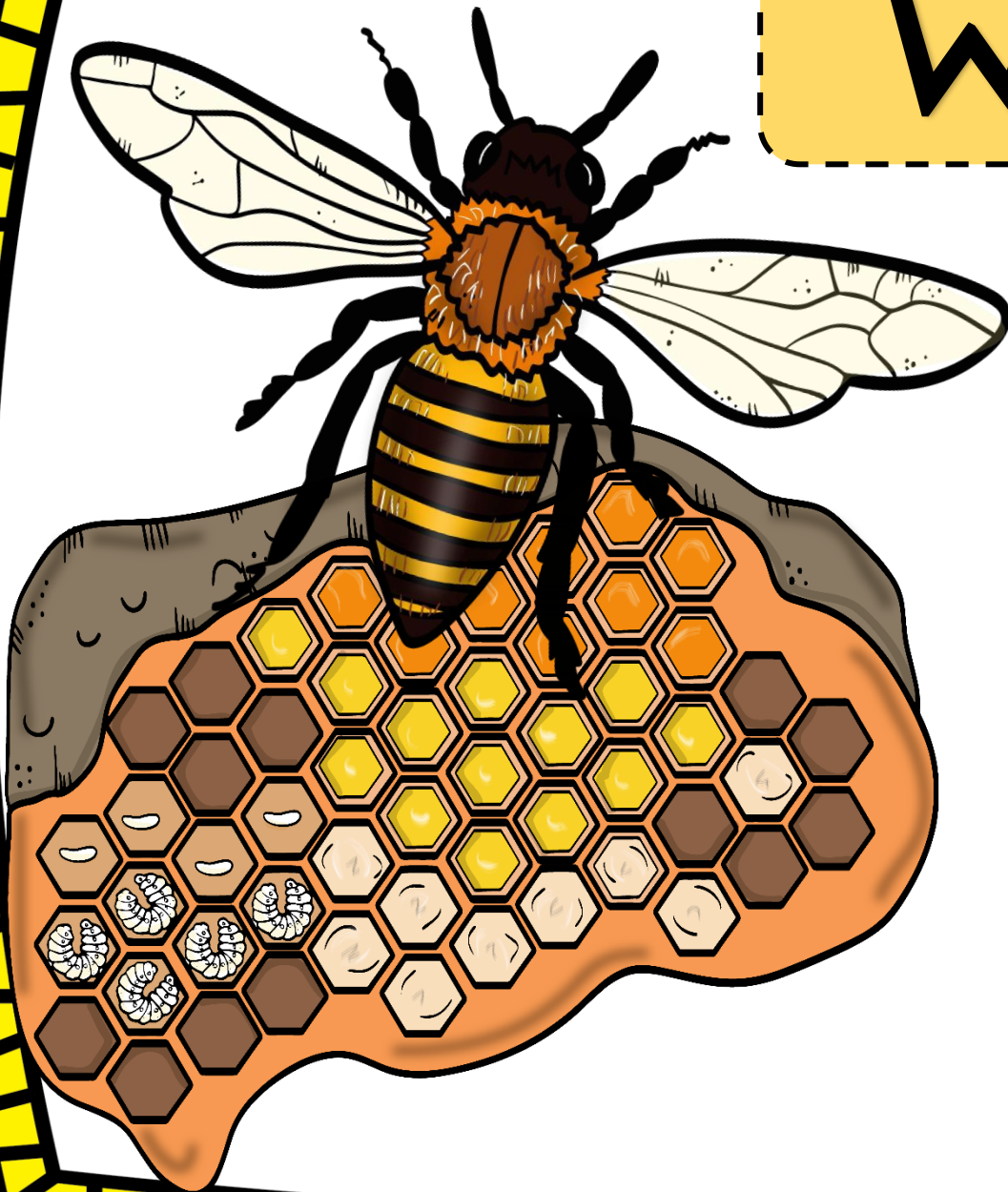
Wood
hive



Honey farmers transport hives from place to place so that the bees can have flowers and produce honey for us.

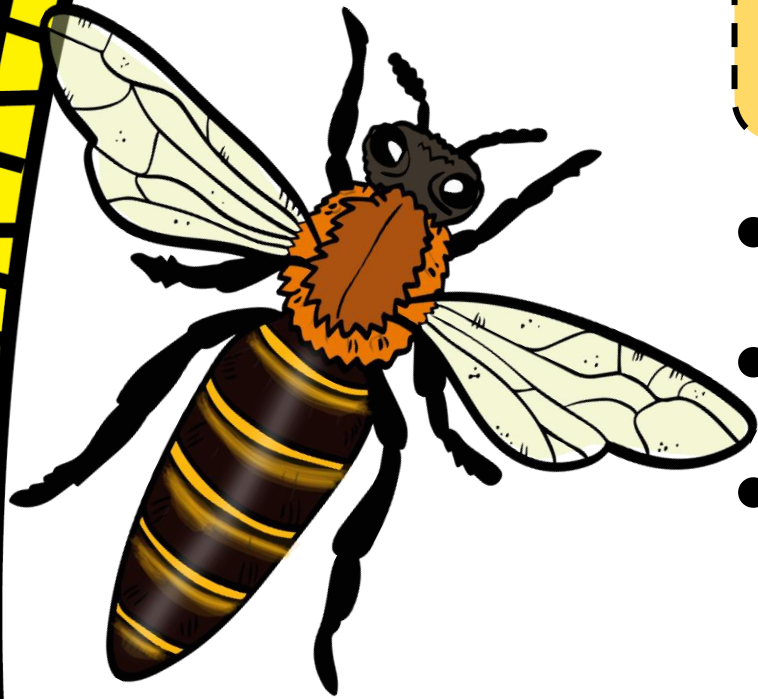


Workers



- They are all female.
- They build and protect the hive.
- They gather food (pollen and nectar from flowers).

Queen



- She runs the whole hive.
- She lays eggs.
- She produces chemicals that guide the behaviour of the other bees.

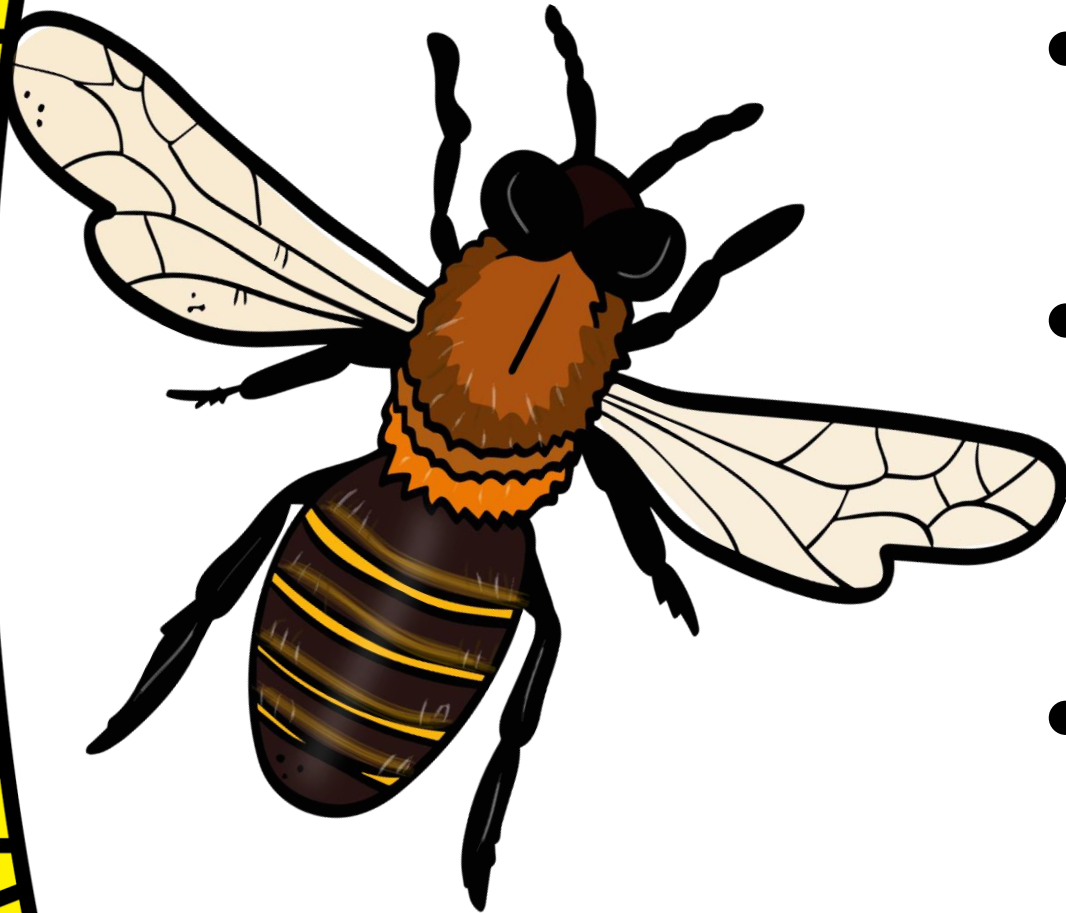


egg



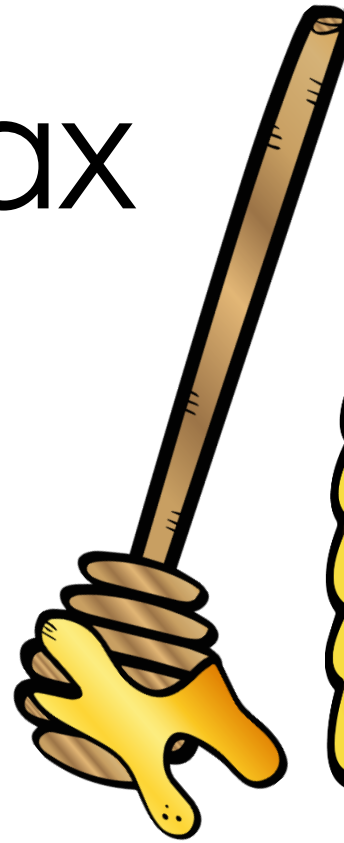
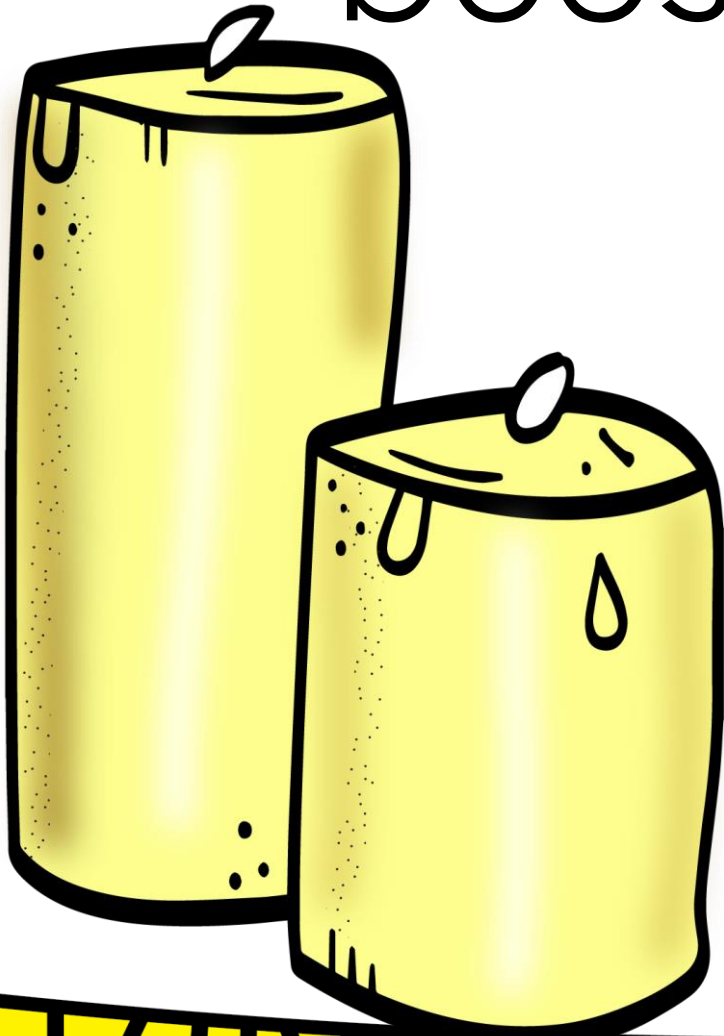
larva

Drones



- They are male bees.
- Their purpose is to mate with the queen.
- They live there during the spring and summer.

Products of a bee
beeswax



honey

If bees do not pollinate
flowers, we will not have
fruit!

